

# WOODFIELD

NEWS  
SPRING / SUMMER 2017



## 2017 Woodfield AGM

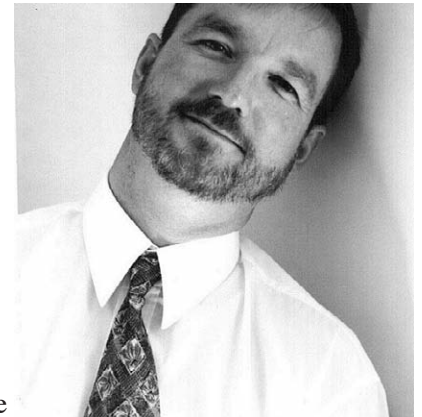
Thursday, April 19

Dessert potluck 6:30 pm

Business portion 7:00 pm

**BISHOP CRONYN  
MEMORIAL CHURCH**

442 William Street



**This is a Voting Year!** Most of the members of the current executive have agreed to stay on for the coming term. However, if someone would like to stand for a specific position at the AGM, let us know by April 9 and we will add your name to the nominations.

*Special Guest Speaker:  
Clark Bryan, Executive Director,  
Aeolian Concert Hall*

This year, we will have a guest speaker joining us: Clark Bryan, founder of El Sistema Aeolian which has taken up residence in the Bishop Cronyn Memorial Church at the corner of Queen and William Streets. El Sistema is a program that offers free music training for youth with a focus of social justice, social inclusion, and community development through music.

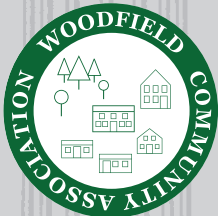
Also at the AGM we will recognize our Neighbour of the Year for 2016, as well as award the Woodfield Streetscape Improvement Awards. We'll cover the usual business of what we worked on in 2016 and what we're looking forward to in 2017.

Again this year we are launching a membership drive! A robust membership count is important not only as an indication of community engagement but more members means we have a louder voice on issues impacting our neighbourhood. So renew or sign up for the first time! The cost of a lifetime membership per household is \$50 and a 4-year membership expiring December 31, 2020 costs \$5.

**22nd Annual Plant  
Exchange and  
and Sales**

**Planning Notes:  
Eyes on potential  
developments**

**DID YOU KNOW?  
Trees increase the  
value of our homes**



### RESIDENTIAL TO THE CORE

The Woodfield News is published twice a year and delivered free of charge within the Woodfield area.

We invite your comments, suggestions and submissions.

Please write to:  
Lorraine de Blois  
c/o Woodfield News,  
3 Prospect Avenue,  
London, ON N6B 3A4  
lorraine@segue.ca

[www.historicwoodfield.com](http://www.historicwoodfield.com)

*A member of the  
Urban League of London*



## Annual Plant Exchange and Sale

Details inside >>>

# The AGM is around the corner and so is spring — *A Message from the Chair*

We have a few surprises planned for the AGM. We're holding it at Bishop Cronyn Memorial Church at the corner of William and Queen! Why the move? A year ago, when the church was looking for tenants to take over the historic space, a deal was struck between the church and Clark Bryan, executive director and founder of the Aeolian Hall, to lease the space to El Sistema, a free UNESCO award winning music program for children and youth. To welcome our new neighbours to the community, we wanted members to learn more about

the program and meet Clark, who is our special guest speaker this year! Clark has an incredible background in music.

Read this from his bio: Clark graduated with both Bachelor and Masters Degrees in piano performance from Western. Since, he has worked with many of the world's renowned pianists including Howard Shelley, Jean Paul, Sevilla, Eugene List, Shura Cherkasky, Vladimir Ashkenazy, Ruth Slenczynska and Ronald Turini. He spent many years working with the celebrated pianist Cécile Ousset both

in Paris and the south of France where he refined much of his pianistic and interpretive abilities.

Clark's performance career has taken him to Europe, Mexico, the United States and throughout Canada. He has done performances for CBC radio and television including a broadcast recital in 2002 at the Glenn Gould Studio, CBC.

In 2004, Clark purchased the Aeolian Performing Arts Centre and School of Music, a magnificent acoustic marvel in London, Ontario. In 2011, he launched El Sistema at the Aeolian, which expanded into Lorne Avenue Public School, then relocated to Bishop Cronyn last winter.

And his accomplishments go on...longer than I have space for! We are thrilled to have Clark speak with us about El Sistema and the program's role in community.

And stay tuned for upcoming concerts at Bishop Cronyn!

— *Kate Rapson, Chair*

## Annual Plant Exchange and Sale

**Lord Roberts French Immersion School, 440 Princess Avenue**

**Plant donations accepted from 8 am  
Shopping starts at 8:30 am**

Spring is here and that means the 22nd Annual Woodfield Plant Sale and Exchange will happen **Saturday, May 20**. Skip breakfast and treat yourself to coffee, a tasty breakfast sandwich or baked goods while you browse the beautiful selection of plants that your neighbours have dug up and donated to share and spread to new gardens. As usual there'll be compost, mulch, annuals, perennials and native trees from Trees for Woodfield including Eastern White and Red Pine trees. Come early for a great selection.

**HOW IT WORKS:** Dig up your perennials, throw them in a pot. Bring your plants to us, (include plant names, colour etc. if you can) trade them in for tokens (we give you half the value we'll sell them for) and then shop for something new for your garden. If you don't have plants to donate don't worry, all shoppers are welcome.

We look forward to mingling with our neighbours at this great event! For more information contact us at [info@historicwoodfield.com](mailto:info@historicwoodfield.com).



## Heritage Alteration Permits



If you are receiving this newsletter, you likely live in one of Woodfield's two Heritage Conservation Districts! If you are planning any (even minor) exterior renovations remember to call Don Menard or Kyle Gonyou (City Heritage Planners) at 519 661-2500 (ext. 0267) to see if you require a 'no fee' Heritage Alteration Permit before you start (to avoid delays or a 'stop work' order). **The call is quick, easy and FREE!**

## Woodfield executive

This is a voting year! If you'd like to get involved in your community, now is the time! We meet about 6 times a year; gather around a kitchen table and talk about Woodfield. If you are interested in joining the executive or have questions, please contact [katerapson@gmail.com](mailto:katerapson@gmail.com).

Here is a list of the executive, all of whom have generously agreed to stand another term.

- Kate Rapson, chair
- Jason Kipfer, planning chair
- Deanna Baldwin, membership chair
- Lorraine de Blois, newsletter chair
- Donna Smith, treasurer
- Vacant, social chair
- Linda Palmer, secretary
- Members at large: Barry Francis, Judy Elliott, Fred Dick, Tyler Moore, Marcus Cole, Gil Warren
- Wes Kinghorn, past chair

# Planning Notes: Eyes on potential developments

*The following is a brief update on some of the potential developments in our area. We'll continue to watch as these progress and engage the broader community where appropriate.*

## 510 Central Ave

After years of working with the developer, Tridon Group, a group of near neighbours and the Woodfield Community Association has agreed on a plan for the redevelopment of a small parcel of land at 510 Central Avenue. The application asks for a 5-unit dwelling. The variances were approved and the application goes to Site Plan Approval next. Many thanks to Barry Francis for working so diligently with the developer.

## 560 & 562 Wellington

An revised application has been received by the City for a "22-storey (78m tall) mixed-use apartment building containing 151 dwelling units and 279m<sup>2</sup> of commercial floor area on the ground floor. The proposed development includes 236 parking spaces incorporated into the building both below and above grade."

Near neighbours and many from Woodfield and London opposed this development for a number of reasons:

- The traffic impact on Wolfe Street and Wellington has not been sufficiently addressed. Increased traffic, left hand turns from the tower would overwhelm this quiet downtown street.
- The sites are not zoned for a high-rise. The Downtown Master Plan does not apply to the sites, the West Woodfield Heritage Plan does not support this scale of development nor do recent bylaws changes to the area bounded by Pall Mall, Wolfe, Waterloo and Wellington. The City's own Official Plan and the London Plan do not support a development of this scale at this site.

This will certainly set a precedent for

other developments around Victoria Park. More developments like this will come forward if this goes through. Victoria Park, enjoyed by the entire city, will be dwarfed by towers. This small parcel of green space will become a dark, windy block.

The Woodfield Community Association will support infill and redevelopment where it is appropriate, for example at 390 Princess Avenue and, more recently at Central Avenue and Waterloo Street, but the

Auburn proposal is too tall. We would support the office use replaced with residential, however, the scale of the Auburn Development is not fitting. Five to 8 storeys would be more appropriate.

The application and the City's recommendations will be presented to the Planning and Environment Committee on May 8, pending final confirmation. We will need your support at this meeting! Please mark your calendars to be at City Hall!

## 2016 Harvestfest Auction and Pot Luck

Harvestfest is always a great night for catching up with Woodfield friends and neighbours with the added bonus of doing a little festive shopping.

This year's event had a record breaking attendance with many new faces making an appearance. Don't miss it this year.



THANK YOU to the donors who contributed to our annual Harvestfest Auction and Pot Luck Supper in November 2016. Over \$1,900.00 was raised because of generous donations from:

### Local business owners

Andrew Douglas Clothier  
Body Worx Fitness  
Boombox Bake Shop  
Boxwoods  
Central Cat Hospital  
Covent Garden Market  
Entrenous Salon  
Eyes on Richmond  
Factory Artists  
Green with Envy  
HRM Photography  
Jill's Table  
Joe Kool's Restaurant

Locomotive Espresso  
Melanie at Salon Cyan  
Palace Theatre  
Palasad  
Pulse Spin Studio  
The Cat's Bark  
The Church Key  
The D'Arcy Lane Institute  
The Grand Theatre  
The Morrissey House  
Trees for Woodfield  
Williams Fresh Cafe  
Woodfield Automotive

### Friends and neighbours

Helen Albert  
Glen Curnoe  
Audrey and Barry Francis  
Jessie Gussack  
Wes Kinghorn and  
Wendy Dickenson  
Jackie and Max Kipfer  
Rosy Loewith  
Rod and Joey McDowell  
Linda Palmer  
Kate Rapson and Jeff Carson  
Adam Strange  
Six Anonymous Neighbours

# DID YOU KNOW? Trees increase the value of our homes

— BY HILARY MOON



In Woodfield we are very fortunate that in the last year we have had so many new plantings of boulevard trees — with thanks to the hard work and receptive ear of Mr. Rick Cosby — who is responsible for boulevard plantings. Our biggest challenge is keeping those “new babies” alive in their first 3 or 4 years of being transplanted into Woodfield. Can YOU take the responsibility of watering — on a weekly basis — a new boulevard tree near you? For 9 months of the year, the trees need more water than Nature usually provides for them — partly because they are planted close to paving and tarmac and the roots do not receive the amount of rain that they would if they were out in nature. Also trees rely on their proximity to each other to maintain their own mini-climate. Our boulevard trees don't have that luxury.

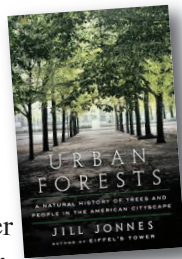
To enjoy and benefit from the rather un-natural way that we place trees on our boulevards, we need to take that special care to ensure that they receive all the nurturing that we can give them to thrive.

As a Committee, we continue to work closely with the City to ensure that Woodfield is well treed. Together we can care for those trees whenever we can plant them. If you notice a spot in Woodfield that you think a tree would be a benefit, either to beautify or bring its other benefits, do let us know so that we can follow

up on your observation.

This year we are focusing on White and Red Pine trees since this was the predominant natural forest in our area before we cut them all down! Pines cannot be planted on boulevards, so if you have an open space in your garden or front yard, please consider planting an Eastern Pine tree — we will have some very good Eastern White and Red Pine trees for purchase at the Plant Exchange

As the world slowly wakes up to the rapidly changing climate conditions, the importance of trees to the well-being of our planet, our cities, and our very selves is becoming an urgent need. We have noticed and explored several new publications and many newspaper articles, encouraging us to become more involved with ensuring a sustainable environment through the planting and maintaining of trees — and specifically the urban forest. A



recent book *The Hidden Life of Trees* has become a New York Times best-seller! My next reading assignment will be another new book *Urban Forests* by Jill Jonnes.

Do you have ideas as to how and where we can expand our tree canopy in Woodfield. We'd love your ideas.

*See you all at the Plant Exchange!*

## Honour a neighbour

Know of a neighbour who has done a little extra for someone or for the community? Been helpful, supportive in large or small ways to a fellow neighbour?

Nominate them for a Neighbour of the Year Award by April 9!

Email [katerapson@gmail.com](mailto:katerapson@gmail.com)

## Community Clean-Up Day



It's time for a Spring cleaning in London and our beautiful Woodfield streetscapes.

**Saturday  
April 22**

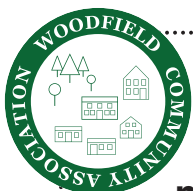
**9 am - noon**

Meet up at the corner of Princess and Maitland. We'll have all the necessary supplies on hand. Other meeting locations will be announced.

— See you then!

Printed with the support of

**NeighbourGood**  
LONDON



## Woodfield Membership

**If you have received this newsletter, you are living in the Woodfield neighbourhood.** Your membership to the Woodfield Community Association is important for the preservation of our neighbourhood. We invite residents not already members to join. \$5.00 for 4 years, Lifetime Membership \$50.00.

Please contact [info@historicwoodfield.com](mailto:info@historicwoodfield.com) for details.